



# Industry Developments, opportunities & Challenges

Introduction by the Association of Arctic Expedition Cruise Operators

Ilja Leo Lang, AECO Office Manager, Danmark



- Member organization founded in 2003 with the **overall goal** to:
  - ensure environmentally friendly, responsible and safe cruise tourism in the Arctic, and
  - advocate for the expedition cruise industry, and AECO's members interests
- AECO currently have 46 members. 26 of which operate approximately 32 expedition cruise vessels all over the Arctic





## THE ARCTIC


AECO uses the same definition of the Arctic as the IMO, i.e.:


- 60 degree north, with exceptions

AECO's guidelines applies in all areas

- AECO's core areas are Svalbard, Jan Mayen, Greenland, Canada and the national park "Russian Arctic" (Franz Josef Land and northern Novaya Zemlya)

# Cruise pattern

 Expedition cruise traffic

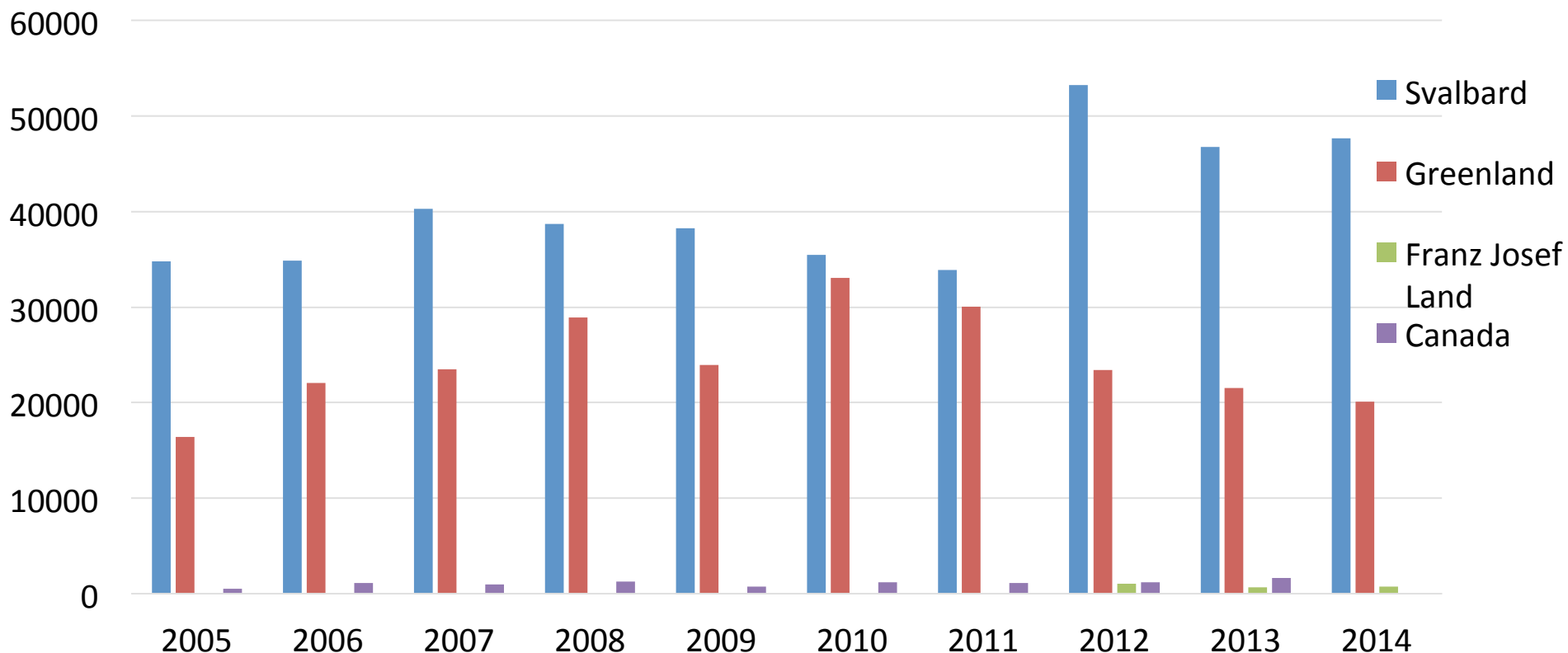
 Conventional cruise traffic



# Cruise passengers

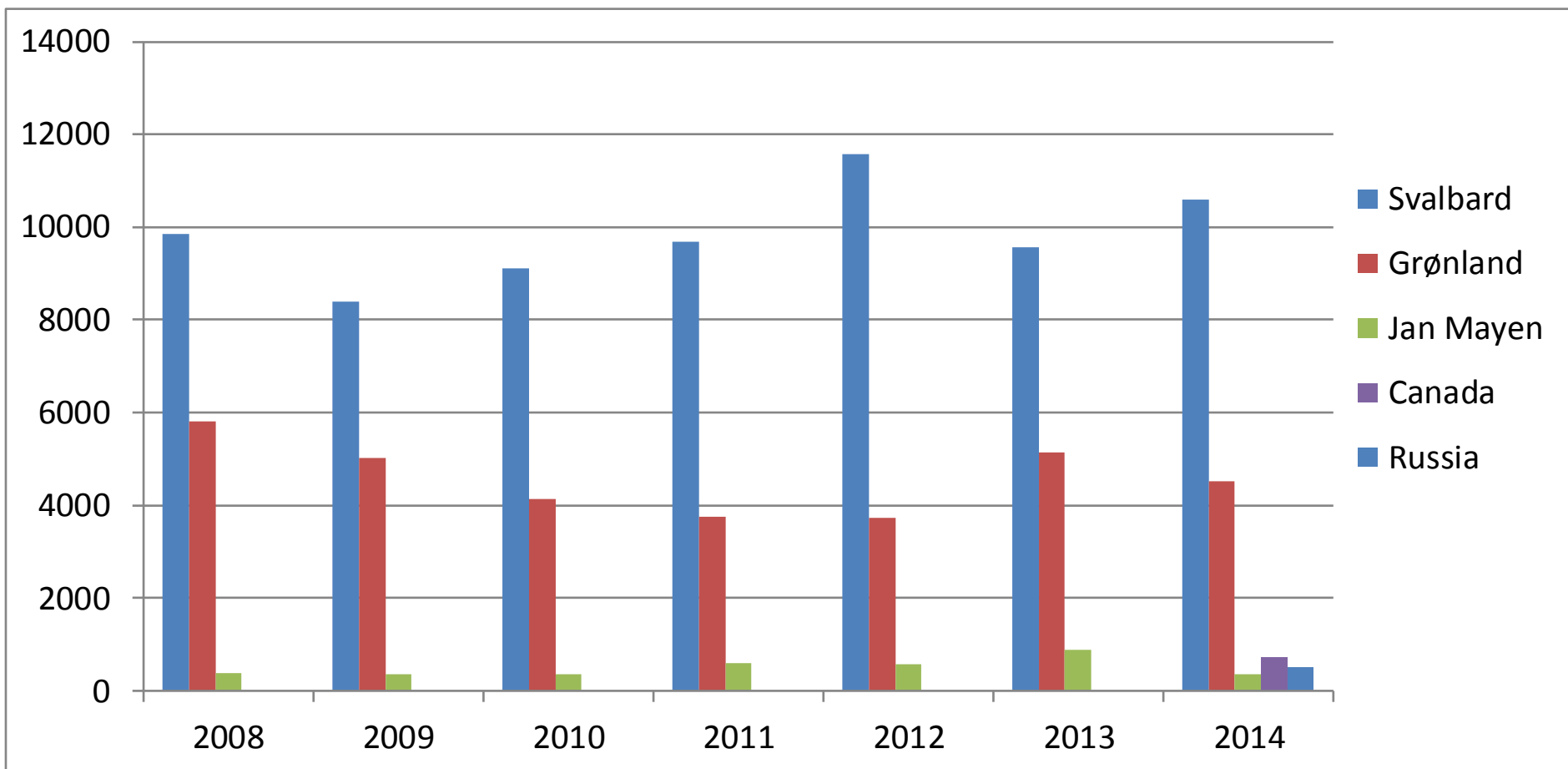
## Svalbard, Greenland, Franz Josef Land, Canada

Conventional cruise vessels and expedition cruise vessels



# AECO passengers

## Svalbard, Greenland, Jan Mayen, Canada & Russia



Numbers include all commercial cruise traffic; passengers on small, medium and large conventional cruise vessels as well as passengers on small expedition cruise vessels.

**Sources:** Governor of Svalbard and Statistics Greenland. Numbers for Canada is an Estimate mad by researchers from University of Ottawa and Lakehaed University. Numbers from Franz Josef Land has been provide by Russian Arctic.

# Arctic cruise tourism risks

## ENVIRONMENT

- Oil spill
- Endangering wildlife
- Ruined vegetation  
(paths, marks)
- Cultural remains  
(wear & tear, stealing)
- Signs & markings
- Transport of non  
-native species
- Garbage / pollution

## SOCIAL/CULTURAL

- Strains on small  
communities
- Disrespect
- Prejudices (both ways)
- Export of banned  
substances
- Traditions / traditional  
activities at risk
- Ignorance in regard to  
the importance of  
providing local benefits

## SAFETY

- Remoteness
- Cold temperatures  
and water
- Ice
- Limited charts
- Limited search and  
rescue facilities
- Communication  
limitations
- Weather- and ice  
predictability limitations

# Measures, Projects & Strategies

- **AECO Guidelines**
- **AECO's Cruise database**
- **Vessel tracking**
- **Crowd sourcing**
- **Clean Up Svalbard**
- **SAR projects**
- **Marine Mammal Sighting project**
- **Voyage Risk Assessment Tool**
- **Conferences**





# AECO guidelines



## Operational guidelines

AECO's comprehensive guidelines for cruise operators

## Visitors guidelines

AECO's guidelines for visitors to the Arctic  
**New** animation  
[bit.ly/1G2btW6](http://bit.ly/1G2btW6)

## Wildlife guidelines

Measures to prevent disturbance of wildlife

## Biosecurity guidelines

Measures to prevent introduction of alien species

## Site specific guidelines

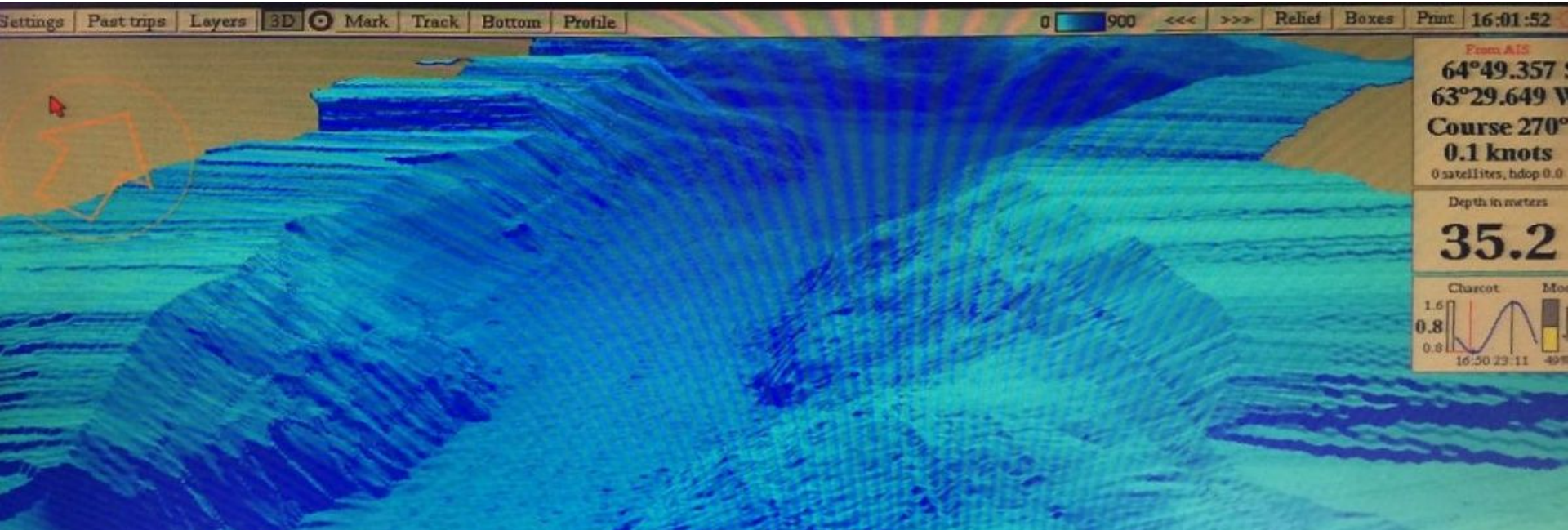
20 different site specific guidelines for Svalbard





# Crowd sourcing of depth soundings

- Olex based solution to 'crowd sourcing' of historical depth soundings



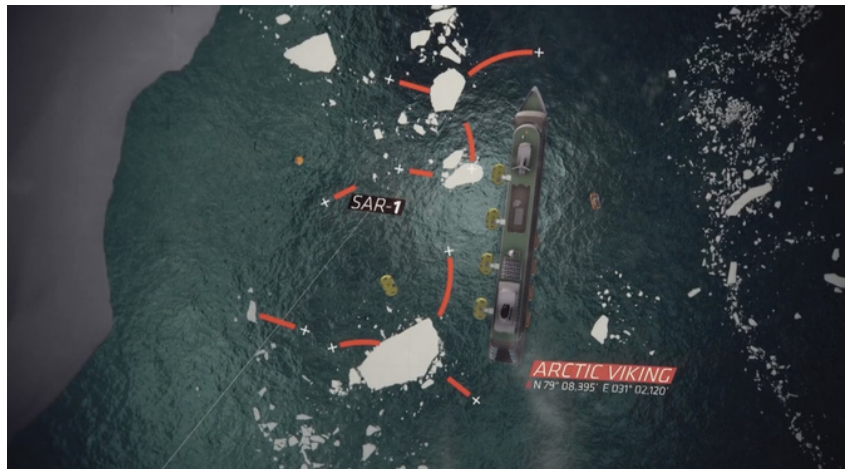
# Clean Up Svalbard

- Cruise industry initiative
- Collection of sea-transported garbage
- 10 years experience – hundred tons of waste
- Cooperation with the Governor of Svalbard

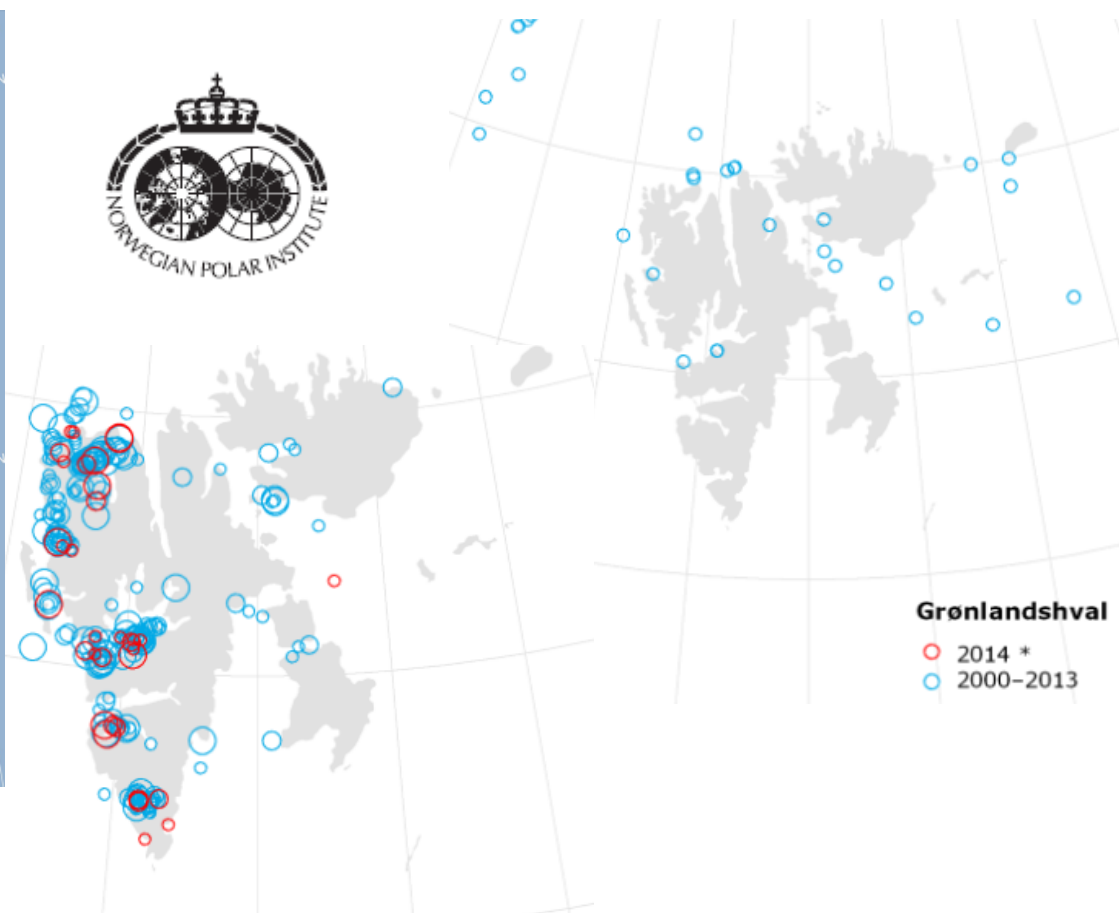
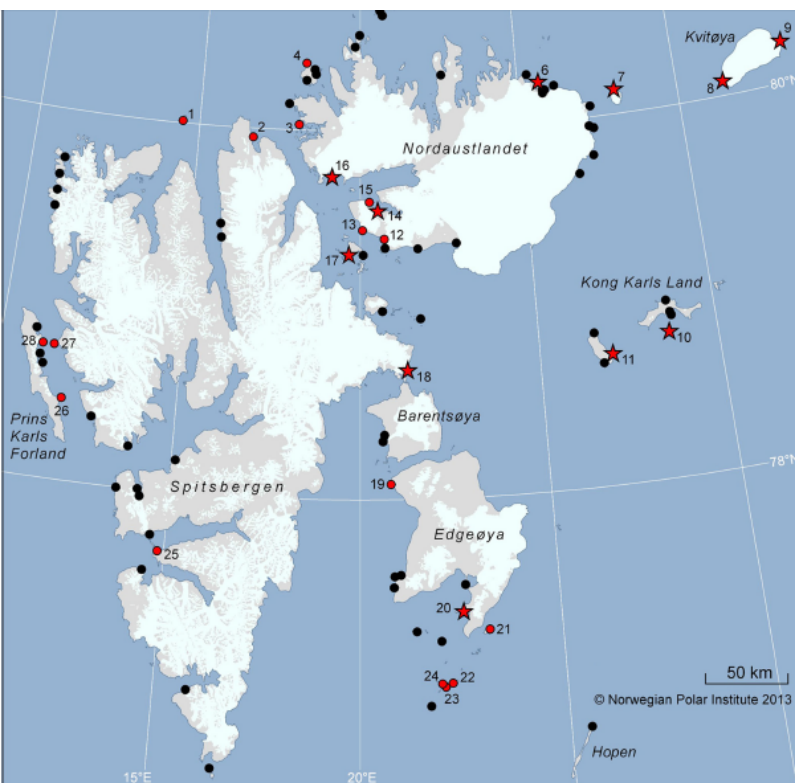


# SAR Projects

- Arctic Zephyr table-top 2014
- Arctic Security Forces Roundtable 2015
- Sharing contingency plans with JRCC



# Marine Mammal Sighting Project



# Voyage Risk Assessment Tool

1. Regions
2. Time of the season
3. Landing Sites, ratings
4. Tide, Neap and Spring
5. Current expected
6. Distances to SAR facilities, to other ships
7. Ice cover and type of ice
8. Wind speed
9. Sea Conditions
10. Visibility
11. Air temperature
12. Miscellaneous factors – internal/vessel issues





# AECO events, conferences & training

- Annual Arctic cruise conference
- Annual meeting (members and special invitees only)
- Industry-research workshops
- Expedition leader Conference
- Member staff seminars
- Expedition leader conferences



Thank you!