


ShipArc 2015

World Maritime University

Regulatory developments and challenges – The Polar Code

An aerial photograph of a ship's deck, likely a research vessel, surrounded by a field of ice floes. The deck is green and yellow, with various equipment and structures visible. A large number of people are standing along the edge of the deck, looking out over the ice. The ship's hull is yellow, and the water is a deep blue. The ice floes are white and blue, creating a complex pattern around the ship.

Arsenio A. Dominguez
Ambassador and Permanent Representative of Panama to the IMO
Chairman MEPC

Code development process

SOLAS Chapter V

Intact Stability Code

MARPOL Annexes I, II and V

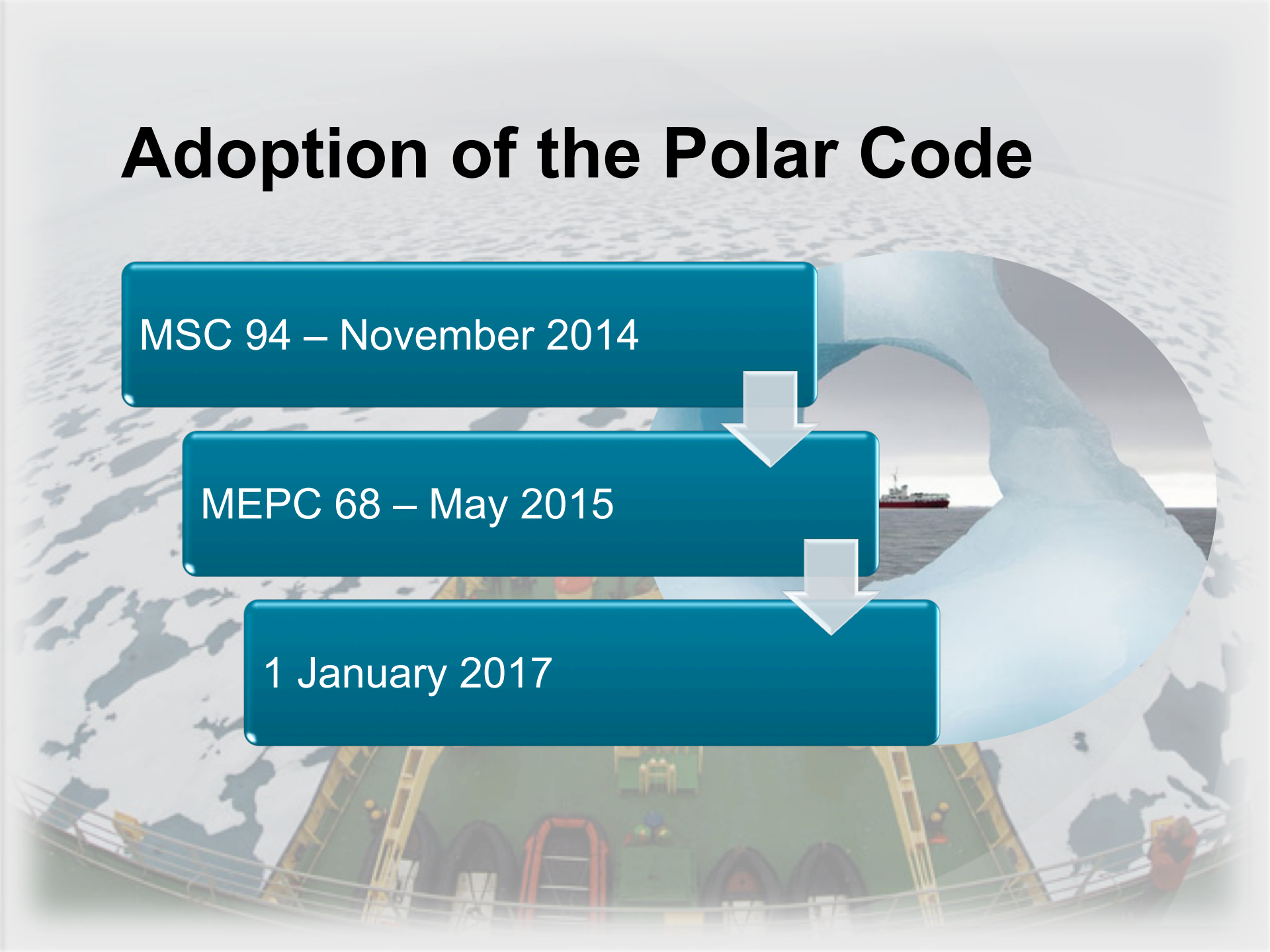
Guidelines

Adoption of the Polar Code

MSC 94 – November 2014

MEPC 68 – May 2015

1 January 2017

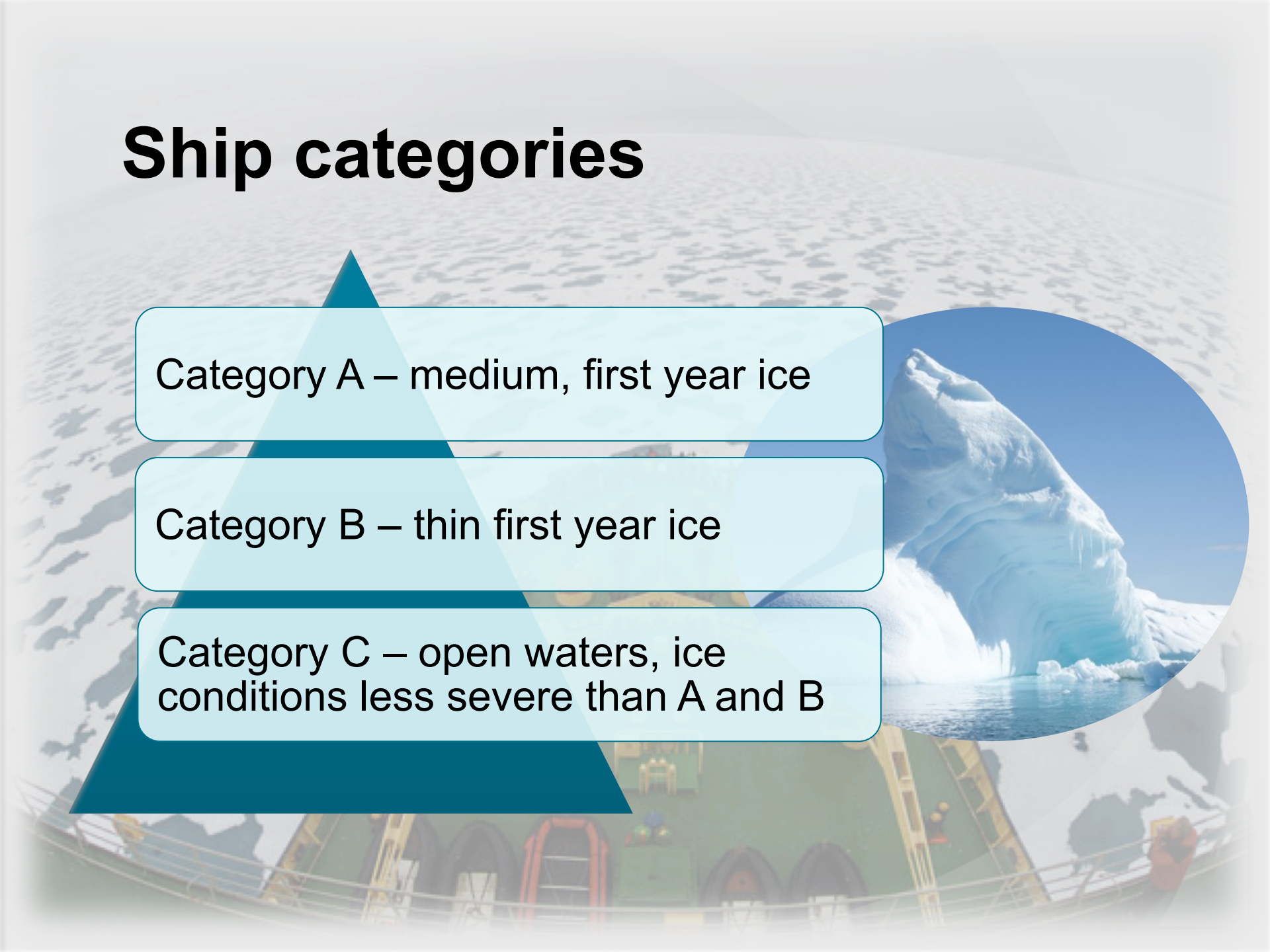


Ship categories

Category A – medium, first year ice

Category B – thin first year ice

Category C – open waters, ice conditions less severe than A and B



Seafarers certification

Minimum requirements for masters and deck officers

Standards of competence, certificates, documentary evidence

Transitional provisions



Further work



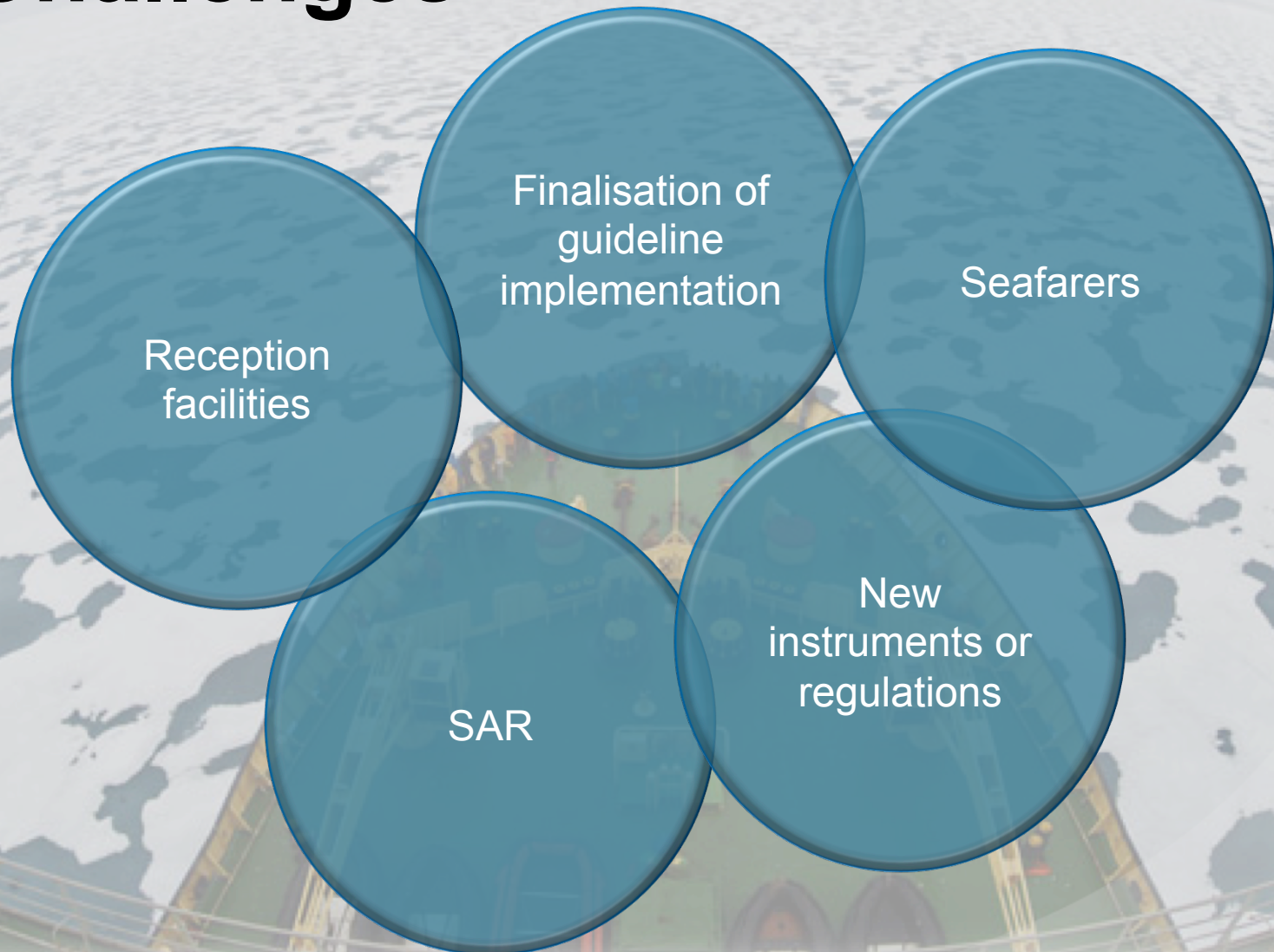
Guidance on a methodology for determining limitations for ships operation in ice - POLARIS (Polar Operational Limit Assessment Risk Indexing System)

Assessment of additional performance / test standards on Fire Protection and LSA

Transitional requirements for training and certification of seafarers

Non SOLAS vessels

Challenges



Thank you

