

WILL THE WORLD BE BETTER WITH EXPLOITATION OF OCEAN ENERGY?

Latifa Martini

Islamic University of Indonesia

International Conference on Maritime Energy
Management 2017

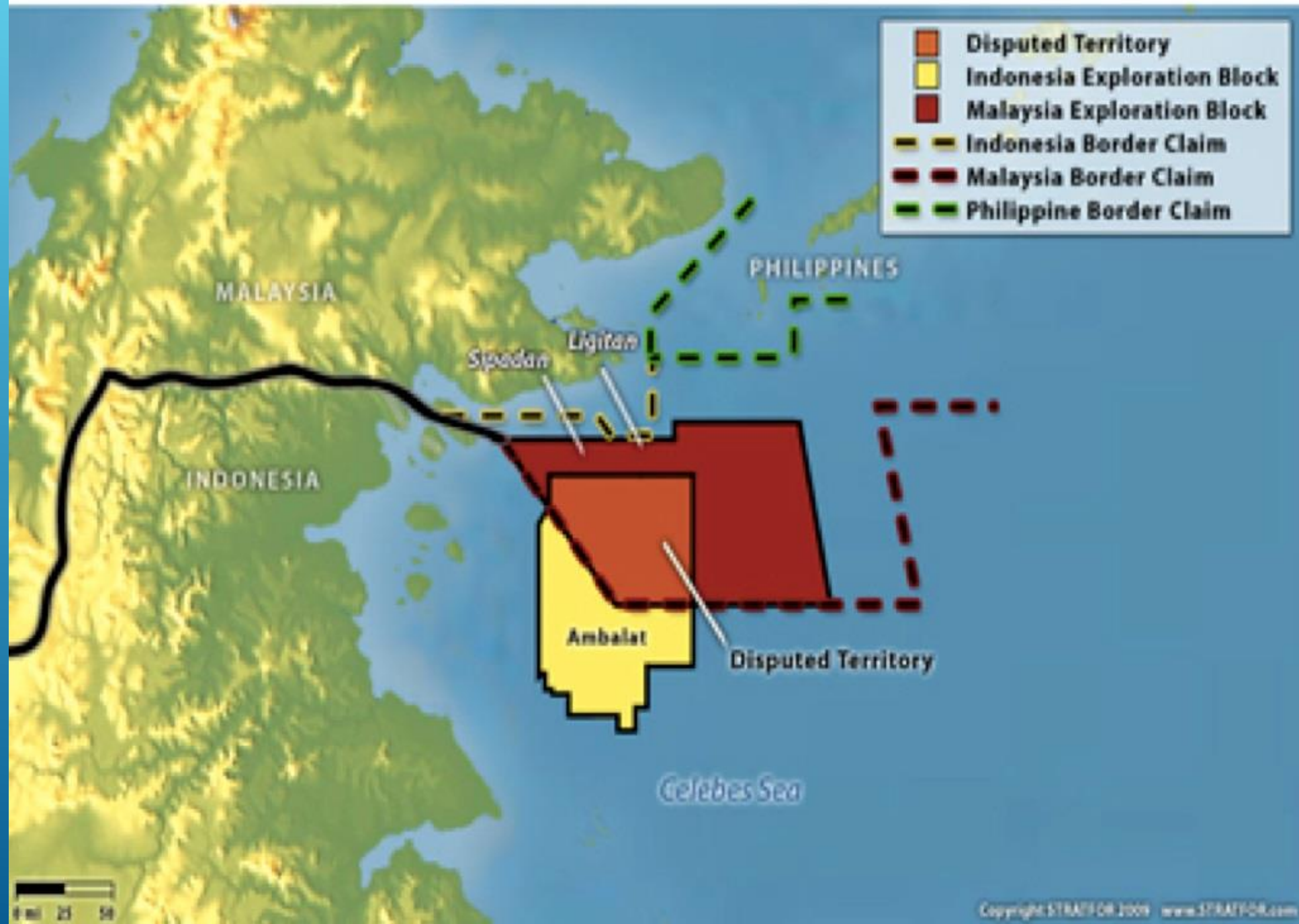
Malmo, 25 January 2017



- ▶ Long time conflict between Malaysia-Indonesia
- ▶ Crowded when Sipadan And Ligitan was owned by Malaysia
- ▶ Diplomacy way was try by Malaysia-Indonesia
- ▶ Block that over claimed before and after Sipadan Ligitan case
- ▶ Gas and mineral potential
- ▶ Different State permit to exploit the energy in the Block of Ambalat

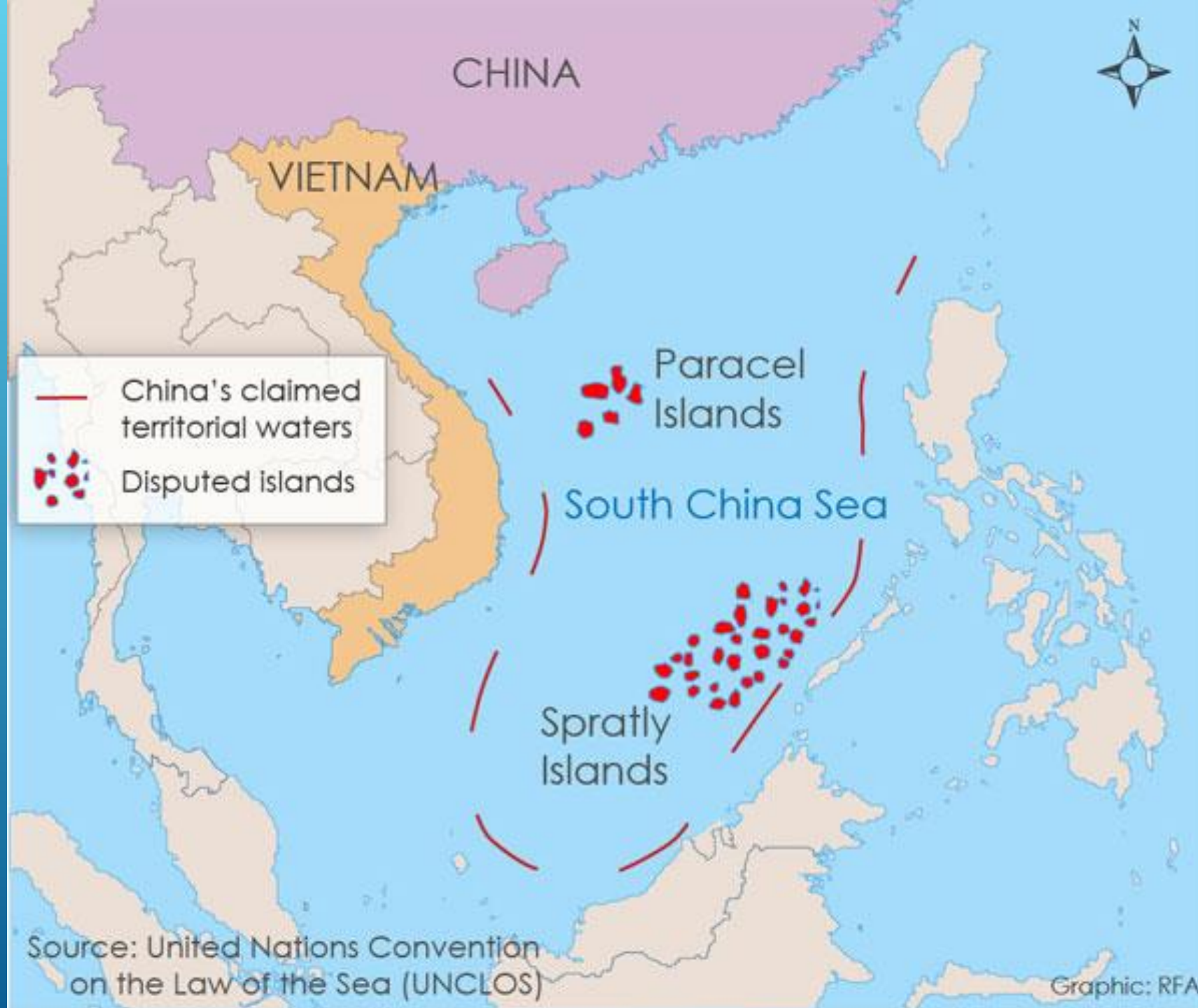
BLOCK OF AMBALAT

INDONESIA-MALAYSIA MARITIME DISPUTE



- ▶ Conflict between China vs Vietnam, Philipina and almost Indonesia (Natuna Sea)
- ▶ Nine Dash Line of China
- ▶ In the Paracel and Spartly Island
- ▶ 11 billion barrels of oil and 190 trillion cubic feet reserve
- ▶ Arbitration is Said that Spartly Island is jurisdiction of Philipina but China is refuse

SOUTH CHINA SEA



Source: United Nations Convention on the Law of the Sea (UNCLOS)

Graphic: RFA

1. Pollution caused by Industries that use Coal

- ▶ Coal as primary energy in the China's Industry
- ▶ Make a damage environment and health problem

2. China's transportation use oil

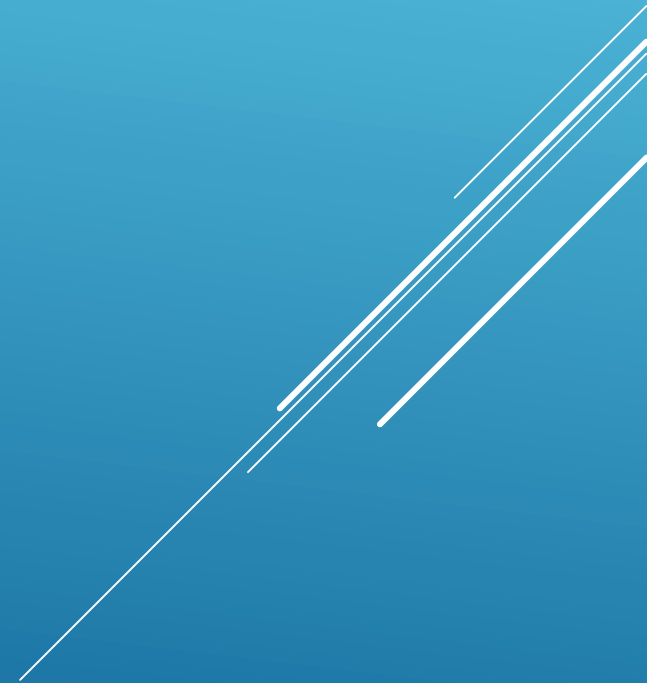
China need gas and oil to substitute coal as primary energy, and South China Sea have the energy potential

(Stephen J. Ruscheinski)

THE INTEREST OF CHINA IN THE SOUTH CHINA SEA

WILL THE WORLD BE BETTER WITH EXPLOITATION OF OCEAN ENERGY?

It is a lot of problem especially in peace conflict between states that have conflict, and i think the world is not better with ocean energy exploitation



DISPUTE SETTLEMENT

The image features a solid blue gradient background. In the bottom right corner, there are several white, parallel diagonal lines that create a sense of motion or a stylized graphic element.


- ▶ Negotiation
- ▶ Mediation
- ▶ Arbitration
- ▶ Regional Organization (if the parties in same organization)

OUT COURT SYSTEM

- ▶ International Court of Justice
- ▶ International Tribunal on The Law of the Sea => The Sea Bed Dispute Chamber

IN COURT SYSTEM

A decorative graphic consisting of several parallel white lines of varying lengths, slanted diagonally from the bottom right towards the top right, set against a blue gradient background.

- ▶ But, even had a lot of conflict that happen because of ocean exploitation, we should know that energy in the land (shore) have been limit
 - ▶ Ocean have a lot of reserve energy, and iit can be used to fulfill energy that needed by all
 - ▶ And gas and oil in the ocean is can be substitute coal as a primary energy
 - ▶ So, the world is better with ocean energy exploitation,
- 
- A decorative graphic consisting of several parallel white lines of varying lengths and orientations, located in the bottom right corner of the slide.

THANK YOU

